

Cord Blood Bank Technician (Band 4)

Recruitment Profile - This is a summary of the Job Description and Person Specification



Blood and Transplant

About the Role

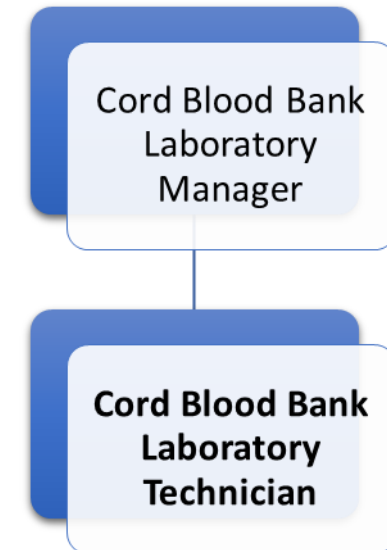
In this role you will work as part of a team assisting the Cord Blood Bank. Your day to day responsibilities will include:

- An experienced multi-skilled worker to process stem cells for clinical banking and research purposes under supervision, performing a wide range of tasks.
- Performs the processing, cryopreservation, storage and quality monitoring of stem cell donations to the required quality standards, using laboratory equipment.
- Requirement to update processing records and to take receipt of, and account for, incoming donations and materials.
- Contribute to a clinical/technical service leading to the release of reports and therapeutic products.
- Assists in developing the service in anticipation of future clinical needs.

Requirement to participate in a shift working rota and an on-call out of hours rota which may include evening, weekend or public holiday working.

Please note that you will be required to work shift patterns.

Organisation Structure



About Us

Our three core principles are critical to our service, guiding everything we do and inspiring us to be the best.

- We **care** about our donors, their families, the patients we serve, and our people.
- We are **expert** at meeting the needs of those who use our service and those who operate it.
- We provide **quality** products, services and experiences for donors, patients and colleagues.

About You - This section details the personal attributes we require for this role. You will need to demonstrate these throughout the recruitment process

Behaviours and Values

- **Communicating** – Friendly and approachable, able to relate to staff, donors and patients from all backgrounds, promoting NHSBT positively
- **Collaborating** – Know the importance of your own behaviour and body language when communicating and working with others
- **Leading** – Professional in matters of confidentiality, security, integrity, honesty, performance, attendance and appearance
- **Customer focused** – Demonstrate and promote high standards of quality customer care to both internal and external customers
- **Performing** – Able to use and act on feedback from others on your performance and behaviour to increase your own self awareness
- **Innovating** – Consider, suggest and be open to alternative ways of working to make continuous improvements

Experience and Knowledge

- Experience of working to standards and protocols in a healthcare laboratory or regulated environment e.g. meeting Good Manufacturing Practice requirements.
- Experience of working with information technology using Microsoft Office packages (Outlook, Word, Excel, Teams and PowerPoint) and basic programs.
- Willing and able to work with blood samples and blood products.
- Experience of the use of computers and basic IT programs
- Experience of handling blood / blood products / tissue.

Skills and Abilities

- Communicate succinctly, clearly and accurately in plain simple English, both verbally and in writing
- Be an effective team member who is able to relate to colleagues at all levels across our large multi-site organisation with tact and diplomacy
- Recognise your own job role boundaries / limits of practice and know when to ask for guidance
- Follow written instructions and ensure the services you provide are in line with standard processes and good practice, showing attention to detail
- Prioritise own workload and take responsibility for delivering results within agreed timescales and standards with changing priorities and pressures
- Use initiative to look out for issues at work, acting quickly and calmly to focus on finding a solution

Qualifications and Training

- BTEC or HNC or 16 modules of the NHSBT Foundation degree or similar qualifications. **OR** Equivalent knowledge of a wide range of non routine duties demanding intermediate level theoretical knowledge acquired through both formal training and extensive experience of working to GMP standards in the NHSBT or other healthcare environment.
- Demonstrates commitment to own continued professional development (CPD)