

# Clinical Scientist or Senior Biomedical Scientist (Band 7)

Recruitment Profile - This is a summary of the Job Description and Person Specification



Blood and Transplant

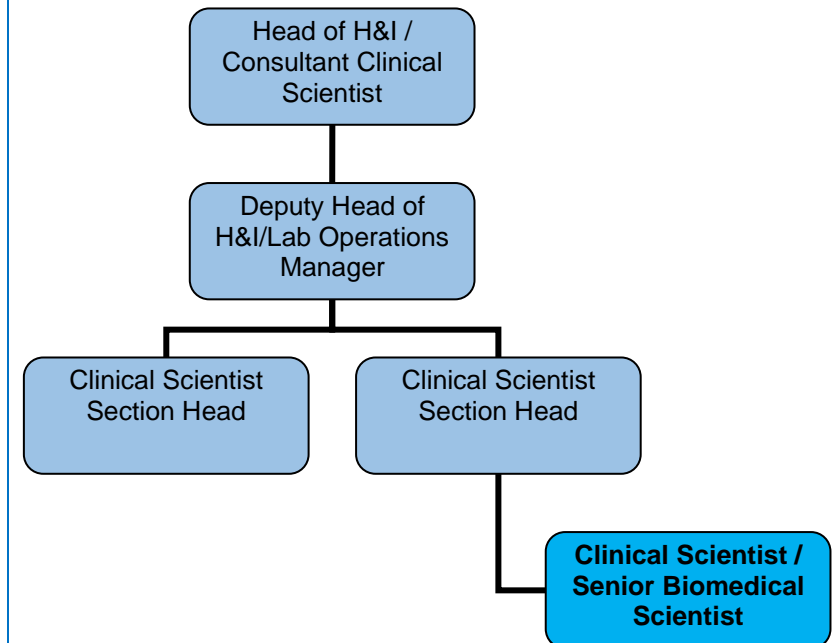
## About the Role

In this role as a Clinical Scientist / Senior Biomedical Scientist, you will be required to analyse, interpret, validate and report the results of specialist Histocompatibility and Immunogenetics (H&I) investigations. Your duties will include:

- Analysing and performing both molecular and serological based testing in relation to solid organ and haematopoietic stem cell transplant and immunogenetic services.
- Assisting with quality management issues within your section of the laboratory, under the direction of the Clinical Scientists Section Head and Laboratory Operations Manager
- Communicating specialist results to internal and external clinicians, other healthcare colleagues and scientific staff on for example test results.
- Contributing to the coordination and supervision of the work, training and conduct of scientific and support staff
- Assisting with the supply of HLA selected platelet units, providing advice to clinicians

With appropriate training and experience you will be required to participate in a 24/7 on-call rota and exceptionally to provide cover in times of operational difficulty for which notice will be given.

## Organisation Structure



## About Us

*Our three core principles are critical to our service, guiding everything we do and inspiring us to be the best.*

- We **care** about our donors, their families, the patients we serve, and our people.
- We are **expert** at meeting the needs of those who use our service and those who operate it.
- We provide **quality** products, services and experiences for donors, patients and colleagues.

**About You** - This section details the personal attributes we require for this role. You will need to demonstrate these throughout the recruitment process

### Behaviours and Values

- **Communicating** – Friendly and approachable, able to relate to staff, donors and patients from all backgrounds, promoting NHSBT positively.
- **Collaborating** – Know the importance of your own behaviour and body language when communicating and working with others.
- **Leading** – Professional in matters of confidentiality, security, integrity, honesty, performance, attendance, and appearance
- **Customer focused** – Demonstrate and promote high standards of quality customer care to both internal and external customers.
- **Performing** – Able to use and act on feedback from others on your performance and behaviour to increase your own self-awareness.
- **Innovating** – Consider, suggest and be open to alternative ways of working to make continuous improvements

### Experience and Knowledge

- In depth knowledge and expertise in clinical solid organ and/or stem cell transplantation science.
- Experience of working to quality and accreditation systems and standards.
- Proficiency in relevant specialised laboratory techniques /environments.
- Experience of working with information technology using Microsoft Office packages (Outlook, Word, Excel, Teams and PowerPoint)

### Skills and Abilities

- Good time management skills with proven ability to prioritise conflicting demands, working to tight deadlines and pressures.
- Ability to foster good working relationships with work colleagues at all levels and external service users.
- Ability to impart your specialist knowledge to peers, trainees and visitors in a constructive and meaningful way.
- Ability to identify, resolve and refer on day to day laboratory issues.
- Demonstrate strong leadership, influence, and accountability for achievement of results.
- Recognise when change is required and demonstrates personal ownership for pursuing, communicating, and implementing change, whilst minimising impact on others

### Qualifications and Training

- MSc or equivalent in transplantation, immunology, transfusion or relevant science or equivalent specialist knowledge gained by examination of a professional body e.g. BSHI Diploma OR equivalent relevant experience.
- Health and Care Professional Council (HCPC) registered Clinical or Biomedical Scientist (which must be maintained).
- BSc in Biological/Medical sciences or relevant sciences.
- Demonstrates commitment to own continued professional development (CPD)