

# Development Lead – Hospital Data Integration project (Band 8a)



Recruitment Profile - This is a summary of the Job Description and Person Specification

Blood and Transplant

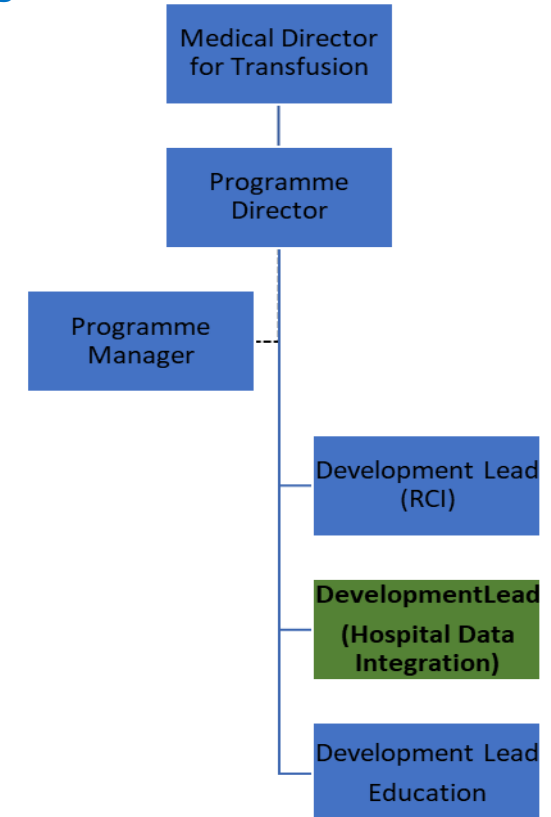
## About the Role

In this role you will be responsible for leading on the Hospital Blood Data Integration project. Your responsibilities will include:

- Working with key stakeholders, drive forward the pilot work to develop an IT solution to integrate data to support better blood stock management in hospitals
- Leading, motivating, and influencing stakeholders to actively participate in change, encouraging team building at all levels.
- Developing the project plan which will include the defining of milestones including how progress will be tracked to ensure successful delivery.
- Developing and delivering appropriate documentation to support the change, for example, service specifications, standard operating procedures, quality plans.
- Collaborating with the team to map out complex interdependencies, resources requirements, risks, and assumptions.
- Working with internal colleagues and external suppliers in creating new systems of data flows between NHSBT and hospitals.
- Deputising for the Programme Director in times of absence

*You will be required to travel and spend time away from base, which will involve working irregular hours and overnight stays when required, with prior notice.*

## Organisation Structure



## About Us

*Our three core principles are critical to our service, guiding everything we do and inspiring us to be the best.*

- We **care** about our donors, their families, the patients we serve, and our people.
- We are **expert** at meeting the needs of those who use our service and those who operate it.
- We provide **quality** products, services and experiences for donors, patients, and colleagues.

**About You** - This section details the personal attributes we require for this role. You will need to demonstrate these throughout the recruitment process

### Behaviours and Values

- **Communicating** – Friendly and approachable, able to relate to staff, and patients from all backgrounds, promoting NHSBT positively.
- **Collaborating** – Know the importance of your own behaviour and body language when communicating and working with others.
- **Leading** – Professional in matters of confidentiality, security, integrity, honesty, performance, attendance, and appearance
- **Customer focused** – Demonstrate and promote high standards of quality customer care to both internal and external customers.
- **Performing** – Able to use and act on feedback from others on your performance and behaviour to increase your own self-awareness.
- **Innovating** – Consider, suggest and be open to alternative ways of working to make continuous improvements

### Skills and Abilities

- Be highly articulate and credible, consistently influencing and delivering inspiring, engaging, and meaningful information regarding future direction
- Build collaborative relationships and solve issues by engaging the right people at the right time
- Lead the team, accepting responsibility for achievement of business objectives and creating a shared sense of ownership for service delivery
- Engage widely with customers to seek input into setting strategic objectives and identifying new ideas and improved ways of working
- Demonstrate strong leadership, influence, and accountability for the achievement of results
- Recognise when change is required and demonstrate personal ownership for pursuing, communicating, and implementing the change, whilst minimising the motivational impact on others

### Experience and Knowledge

- Experience as a senior biomedical scientist in a laboratory relevant to the role.
- Knowledge and understanding of transfusion issues within hospitals and the challenges facing the transfusion environment.
- Experience of preparing and presenting clinical and scientific material.
- Experienced in managing projects and delivering change.
- Experience of working with information technology such as Microsoft Office suite (Outlook, Word, Excel, Teams and PowerPoint).

### Qualifications and Training

- Masters degree or equivalent relevant qualification. OR equivalent experience.
- Health and Care Professionals Council (HCPC) registered Biomedical Scientist, which must be retained in the role.
- Demonstrates commitment to own continued professional development (CPD).