

Data Integrity Lead - RCI (Band 7)

Recruitment Profile - This is a summary of the Job Description and Person Specification

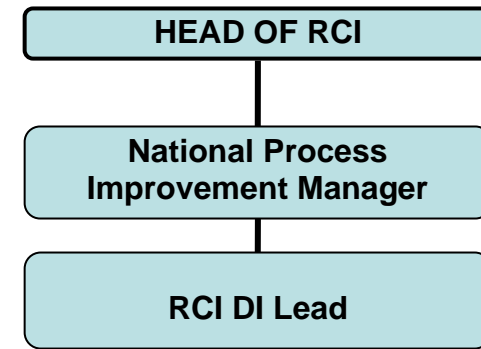
About the Role

In this role you will be the functional lead, within Red Cell Immunohaematology (RCI) and Reagents, for ensuring all required data integrity assessments are recorded on the on-line platform CoreStream. Your responsibilities will include:

- Working with systems and process leads to gather data from a variety of sources to produce process maps and provide the relevant evidence to populate data integrity assessments on CoreStream.
- Leading and contributing to a variety of activities and meetings.
- Supporting the RCI National Process Improvement Manager, systems and process experts and the wider function to ensure RCI and Reagents are compliant with NHSBT data integrity requirements.
- Routinely monitor the status of data integrity assessments on CoreStream and develop action plans to ensure these are managed effectively.
- Managing and delivering national data integrity training.
- Provide regular reports to the RCI senior management team.
- Assist in the promotion of data integrity throughout RCI and Reagents.

You will be required to travel and spend time away from base, which will involve working irregular hours when required, with prior notice

Organisation Structure



About Us

Our three core principles are critical to our service, guiding everything we do and inspiring us to be the best.

- We **care** about our donors, their families, the patients we serve, and our people.
- We are **expert** at meeting the needs of those who use our service and those who operate it.
- We provide **quality** products, services and experiences for donors, patients and colleagues.

About You - This section details the personal attributes we require for this role. You will need to demonstrate these throughout the recruitment process

Behaviours and Values

- **Communicating** – Friendly and approachable, able to relate to staff, donors and patients from all backgrounds, promoting NHSBT positively
- **Collaborating** – Know the importance of your own behaviour and body language when communicating and working with others
- **Leading** – Professional in matters of confidentiality, security, integrity, honesty, performance, attendance and appearance
- **Customer focused** – Demonstrate and promote high standards of quality customer care to both internal and external customers
- **Performing** – Able to use and act on feedback from others on your performance and behaviour to increase your own self awareness
- **Innovating** – Consider, suggest and be open to alternative ways of working to make continuous improvements

Experience and Knowledge

- Experience of setting objectives for working groups
- Experience in process mapping of systems and processes
- Proven ability for obtaining, analysing and reviewing complex information drawn from a number of sources and to develop recommendations
- Proven ability to develop and implement plans within agreed timescale and budget
- Experience of working with Information Technology using Microsoft Office packages (Word, Excel and PowerPoint)

Skills and Abilities

- Good time management skills with proven ability to prioritise conflicting demands, working to tight deadlines and pressures
- Ability to foster good working relationships with work colleagues at all levels and external service users
- Ability to impart your specialist knowledge to peers, trainees and visitors in a constructive and meaningful way
- Ability to identify, resolve and refer on day to day laboratory issues
- Demonstrate strong leadership, influence and accountability for achievement of results
- Recognise when change is required and demonstrates personal ownership for pursuing, communicating and implementing change, whilst minimising impact on others

Qualifications and Training

- Masters level qualification in relevant subject or significant relevant experience equivalent to Masters level
- Demonstrates commitment to own continued professional development (CPD)